








Legenda



-  Confine comunale
-  Sorgente non captata
-  Sorgenti
-  Pozzi

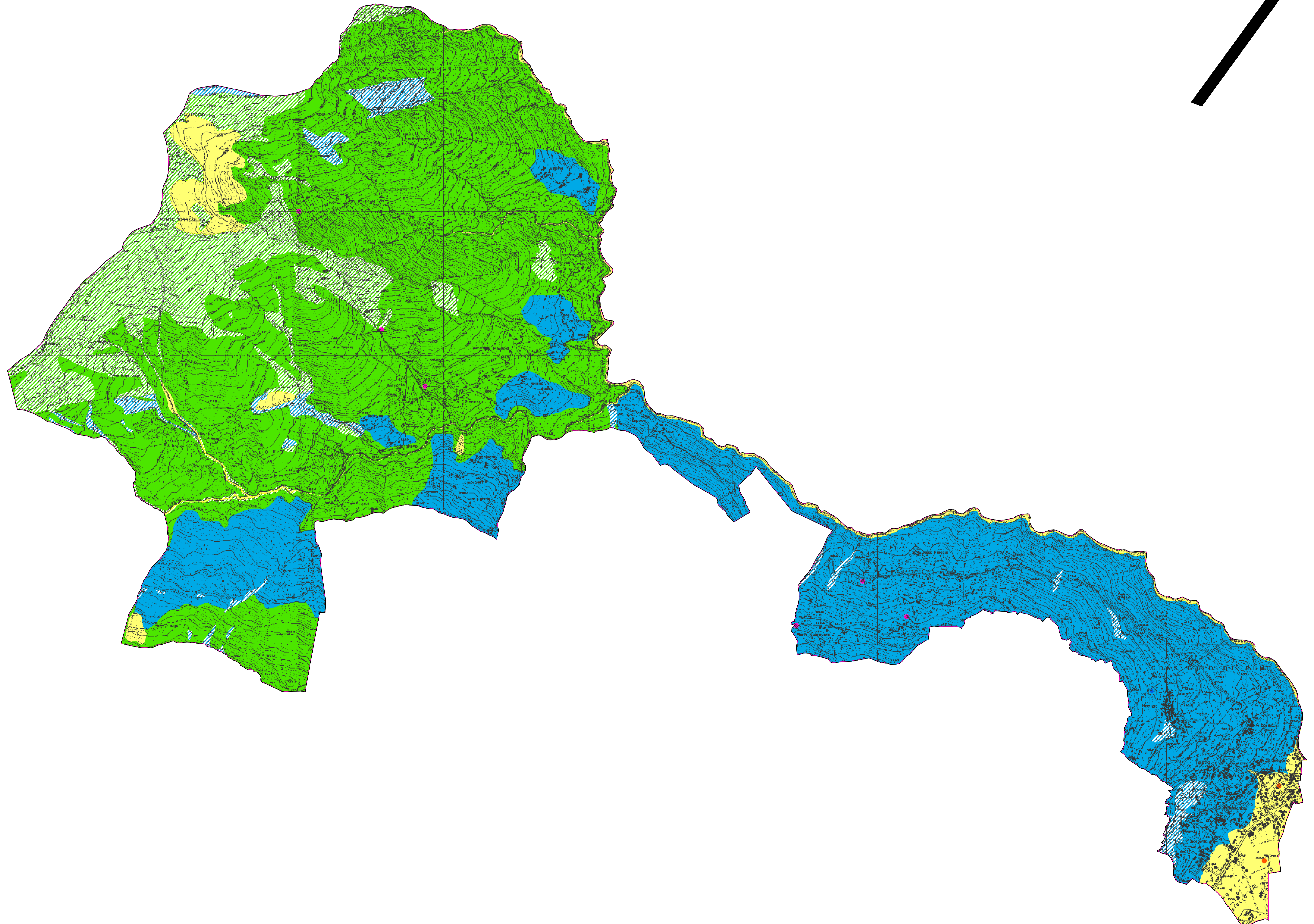
Idrogeologia

TERRENO

-  Permeabilità da elevata a media ($10^{-2} < k < 10^{-4}$)
-  Permeabilità da media a ridotta ($10^{-4} < k < 10^{-6}$)
-  Permeabilità da ridotta a molto ridotta ($10^{-6} < k < 10^{-9}$)

SUBSTRATO

-  Permeabilità da media a ridotta
-  Permeabilità da ridotta a molto ridotta



 Regione Lombardia

PIANO DI GOVERNO DEL TERRITORIO

*COMUNE DI
CONSIGLIO DI RUMO
Provincia di Como*

Aggiornamento della componente geologica, idrogeologica
e sismica di supporto al Piano di Governo del Territorio -
L.R. 12/05 e successive modifiche.

CARTA IDROGEOLOGICA



GeoTeAm
Studio di Geologia, Tecnica ed Ambientale
Via Villatico 11 - 22021 Colere (LC)
Tel. +39 031 9193311
www.studiogeoteam.com
recalc@studiogeoteam.com

Dott. Geol. Claudio Depoli

COLLABORAZIONE Dott.ssa Valentina Pozzi

DATA: Ottobre 2010	SCALA: 1:10,000	Sindaco
REV.:	ELAB.: 6	Segretario